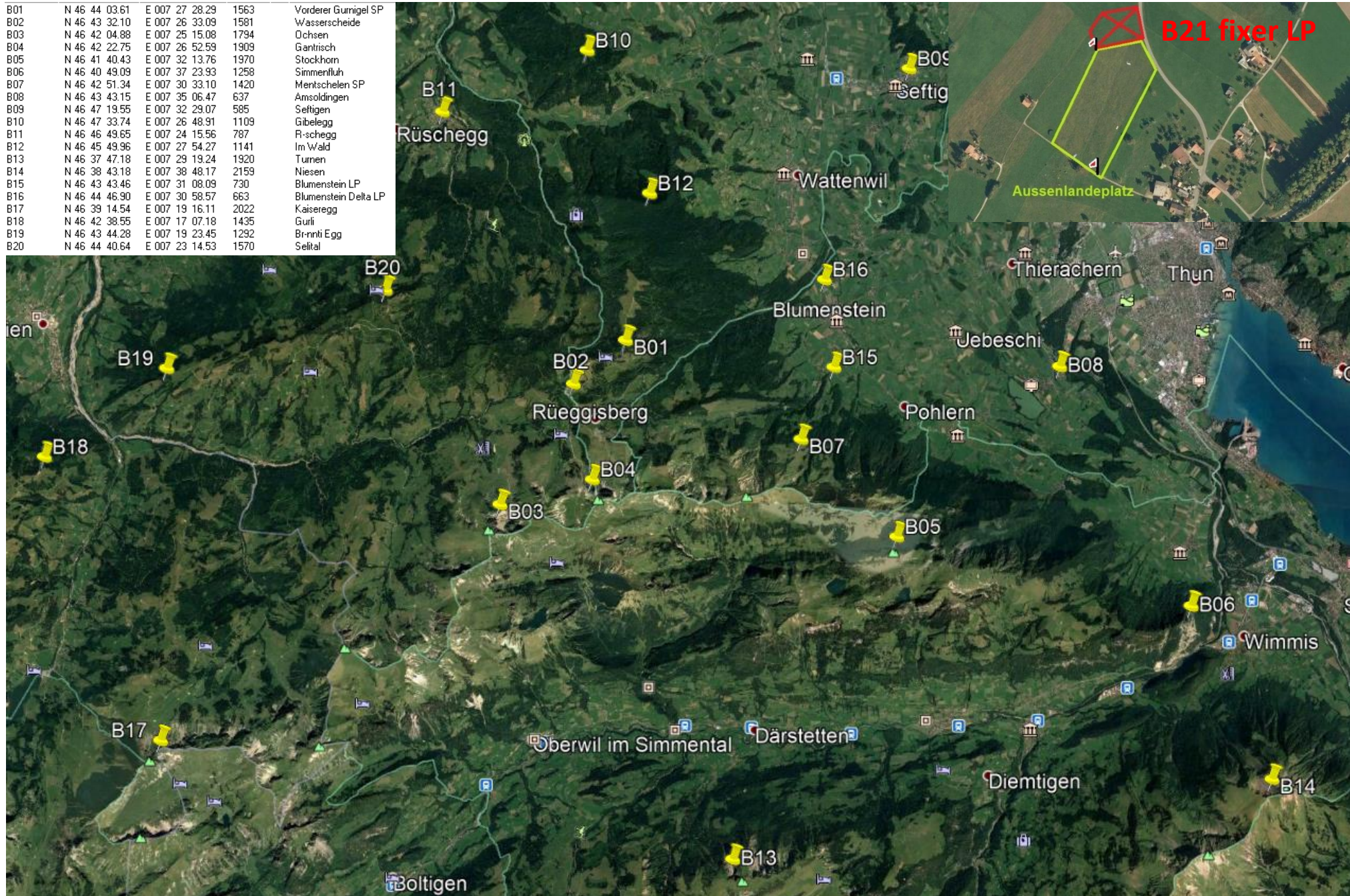


B01	N 46 44 03.61	E 007 27 28.29	1563	Vorderer Gurnigel SP
B02	N 46 43 32.10	E 007 26 33.09	1581	Wasserscheide
B03	N 46 42 04.88	E 007 25 15.08	1794	Dachsen
B04	N 46 42 22.75	E 007 26 52.59	1909	Gantrisch
B05	N 46 41 40.43	E 007 32 13.76	1970	Stockhorn
B06	N 46 40 49.09	E 007 37 23.93	1258	Simmentfluh
B07	N 46 42 51.34	E 007 30 33.10	1420	Mentschelen SP
B08	N 46 43 43.15	E 007 35 06.47	637	Amsoldingen
B09	N 46 47 19.55	E 007 32 29.07	585	Seftigen
B10	N 46 47 33.74	E 007 26 48.91	1109	Gibelegg
B11	N 46 46 49.65	E 007 24 15.56	787	R-schegg
B12	N 46 45 49.96	E 007 27 54.27	1141	Im Wald
B13	N 46 37 47.18	E 007 29 19.24	1920	Türnen
B14	N 46 38 43.18	E 007 38 48.17	2159	Niesen
B15	N 46 43 43.46	E 007 31 08.09	730	Blumenstein LP
B16	N 46 44 46.90	E 007 30 58.57	663	Blumenstein Delta LP
B17	N 46 39 14.54	E 007 19 16.11	2022	Kaiseregg
B18	N 46 42 38.55	E 007 17 07.18	1435	Gurli
B19	N 46 43 44.28	E 007 19 23.45	1292	Br-nnti Egg
B20	N 46 44 40.64	E 007 23 14.53	1570	Seltal



Report back immediately after landing

Send an SMS with the text „para stop“ (without quotes) to the CCSS phone number.